

BROADCAST APPLICATIONS



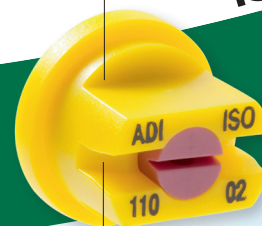
ALBUZ

catalog 2020

Dimensions:
8 mm

ISO

Drift reduction flat fan spray nozzle ADI 110°



ISO color code

SPECIFIC CHARACTERISTICS

- › Flow rate characteristics, body size and color code meet international ISO standard.
- › Drift reduction nozzle: reduces the number of small droplets ($\lt;100\mu\text{m}$) by 50%.
- › Easy to dismantle and clean.
- › **Minimum height boom recommended: 20 inches.**
- › **Minimum pressure: 30 psi.**



Easy to dismantle and clean

MAIN CHARACTERISTICS

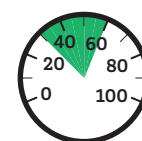
- › Pink ALBUZ® ceramic orifice (excellent precision and high wear resistance).
- › 110 degree flat fan pattern. Overlap required to ensure uniform distribution on the target.
- › Designed for all types of nozzle bodies with ISO compatible caps.
- › Drift reduction.

FLOW RATE CHART

Color	ISO CODE	Mesh	(psi)	gpm	Gallons / acre - nozzle spacing: 20 inches									
					4 mph	5 mph	6 mph	7 mph	8 mph	10 mph	12 mph	16 mph	20 mph	
ORANGE	ADI 11001	100 Mesh	30	F	0.087	6.5	5.2	4.3	3.7	3.2	2.6	2.2	1.6	1.3
			35	F	0.094	7.0	5.6	4.7	4.0	3.5	2.8	2.3	1.7	1.4
			40	F	0.10	7.4	5.9	5.0	4.2	3.7	3.0	2.5	1.9	1.5
			50	F	0.11	8.2	6.5	5.4	4.7	4.1	3.3	2.7	2.0	1.6
			60	F	0.12	8.9	7.1	5.9	5.1	4.5	3.6	3.0	2.2	1.8
GREEN	ADI 110015	100 Mesh	30	M	0.13	9.9	7.9	6.6	5.6	4.9	4.0	3.3	2.5	2.0
			35	M	0.14	10.4	8.3	6.9	5.9	5.2	4.2	3.5	2.6	2.1
			40	F	0.15	11.1	8.9	7.4	6.4	5.6	4.5	3.7	2.8	2.2
			50	F	0.17	12.7	10.2	8.5	7.3	6.3	5.1	4.2	3.2	2.5
			60	F	0.18	13.4	10.7	8.9	7.6	6.7	5.3	4.5	3.3	2.7
YELLOW	ADI 11002	100 Mesh	30	M	0.17	12.6	10.1	8.4	7.2	6.3	5.0	4.2	3.2	2.5
			35	M	0.19	14.1	11.3	9.4	8.1	7.1	5.6	4.7	3.5	2.8
			40	M	0.20	14.9	11.9	9.9	8.5	7.4	5.9	5.0	3.7	3.0
			50	F	0.22	16.3	13.1	10.9	9.3	8.2	6.5	5.4	4.1	3.3
			60	F	0.24	17.8	14.3	11.9	10.2	8.9	7.1	5.9	4.5	3.6
PURPLE	ADI 110025	50 Mesh	30	M	0.22	16.5	13.2	11.0	9.4	8.2	6.6	5.5	4.1	3.3
			35	M	0.23	17.1	13.7	11.4	9.8	8.5	6.8	5.7	4.3	3.4
			40	M	0.25	18.6	14.9	12.4	10.6	9.3	7.4	6.2	4.6	3.7
			50	F	0.28	20.8	16.6	13.9	11.9	10.4	8.3	6.9	5.2	4.2
			60	F	0.31	23.3	18.7	15.5	13.3	11.7	9.3	7.8	5.8	4.7
BLUE	ADI 11003	50 Mesh	30	M	0.26	19.3	15.4	12.9	11.0	9.7	7.7	6.4	4.8	3.9
			35	M	0.28	20.8	16.6	13.9	11.9	10.4	8.3	6.9	5.2	4.2
			40	M	0.30	22.3	17.8	14.9	12.7	11.1	8.9	7.4	5.6	4.5
			50	M	0.34	25.5	20.4	17.0	14.6	12.7	10.2	8.5	6.4	5.1
			60	F	0.37	27.5	22.0	18.3	15.7	13.7	11.0	9.2	6.9	5.5
RED	ADI 11004	50 Mesh	30	C	0.35	26.3	21.0	17.5	15.0	13.1	10.5	8.8	6.6	5.3
			35	C	0.37	27.5	22.0	18.3	15.7	13.7	11.0	9.2	6.9	5.5
			40	C	0.40	29.7	23.8	19.8	17.0	14.9	11.9	9.9	7.4	5.9
			50	M	0.45	33.4	26.7	22.3	19.1	16.7	13.4	11.1	8.4	6.7
			60	M	0.49	36.4	29.1	24.3	20.8	18.2	14.6	12.1	9.1	7.3

APPLICATIONS

All types of treatments (herbicides, fungicides, insecticides...).



30-60 dpi



110°

