

ISO

Dimensions:
11 mm



BROADCAST
APPLICATIONS

catalog 2020

ALBUZ

AVI 110° Air induction flat fan spray nozzle

MAIN CHARACTERISTICS

- › Designed to be used over a wide range of pressures (from 40 to 80 psi).
- › Pink ALBUZ® ceramic double orifices (excellent precision and high wear resistance).
- › 110 degree flat fan pattern. Overlap required to ensure uniform distribution on the target.
- › Designed for all types of nozzle bodies.

SPECIFIC CHARACTERISTICS

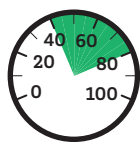
- › Air-injected spray nozzle (venturi system) : sprays large drops charged with air bubbles ; the AVI 110° model is certified at 75% anti-drift.
- › Almost totally eliminates drift, while increasing the number of impacts (excellent coverage of the treated zone).
- › Anti-clogging design and double air-intake orifice.
- › Compact design (1.10 inch length) adapted to all booms and nozzle holders.
- › **Minimum height boom recommended: 20 inches.**
- › **Minimum pressure: 40 psi.**

FLOW RATE CHART

Color	ISO code	Mesh	Pressure (psi)	Drop Size	gpm	Gallons / acre - nozzle spacing: 20 inches								
						4 mph	5 mph	6 mph	8 mph	10 mph	12 mph	14 mph	16mph	20 mph
ORANGE	AVI 110 01	100 Mesh	40	VC	0.10	7.4	5.9	5.0	3.7	3.0	2.5	2.1	1.9	1.5
			50	VC	0.11	8.2	6.5	5.4	4.1	3.3	2.7	2.3	2.0	1.6
			60	C	0.12	8.9	7.1	5.9	4.5	3.6	3.0	2.5	2.2	1.8
			75	C	0.14	10.4	8.3	6.9	5.2	4.2	3.5	3.0	2.6	2.1
GREEN	AVI 110 015	100 Mesh	40	XC	0.15	11.1	8.9	7.4	5.6	4.5	3.7	3.2	2.8	2.2
			50	VC	0.17	12.7	10.2	8.5	6.3	5.1	4.2	3.6	3.2	2.5
			60	VC	0.18	13.4	10.7	8.9	6.7	5.3	4.5	3.8	3.3	2.7
			75	C	0.21	15.6	12.5	10.4	7.8	6.2	5.2	4.5	3.9	3.1
YELLOW	AVI 110 02	100 Mesh	40	XC	0.20	14.9	11.9	9.9	7.4	5.9	5.0	4.2	3.7	3.0
			50	XC	0.22	16.3	13.1	10.9	8.2	6.5	5.4	4.7	4.1	3.3
			60	VC	0.24	17.8	14.3	11.9	8.9	7.1	5.9	5.1	4.5	3.6
			75	VC	0.27	20.0	16.0	13.4	10.0	8.0	6.7	5.7	5.0	4.0
PURPLE	AVI 110 025	50 Mesh	40	XC	0.25	18.6	14.9	12.4	9.3	7.4	6.2	5.3	4.6	3.7
			50	XC	0.28	20.8	16.6	13.9	10.4	8.3	6.9	5.9	5.2	4.2
			60	VC	0.31	23.3	18.7	15.5	11.7	9.3	7.8	6.7	5.8	4.7
			75	VC	0.34	25.2	20.2	16.8	12.6	10.1	8.4	7.2	6.3	5.0
BLUE	AVI 110 03	50 Mesh	40	XC	0.30	22.3	17.8	14.9	11.1	8.9	7.4	6.4	5.6	4.5
			50	XC	0.34	25.5	20.4	17.0	12.7	10.2	8.5	7.3	6.4	5.1
			60	XC	0.37	27.5	22.0	18.3	13.7	11.0	9.2	7.8	6.9	5.5
			75	VC	0.41	30.4	24.4	20.3	15.2	12.2	10.1	8.7	7.6	6.1
RED	AVI 110 04	50 Mesh	40	XC	0.40	29.7	23.8	19.8	14.9	11.9	9.9	8.5	7.4	5.9
			50	XC	0.45	33.4	26.7	22.3	16.7	13.4	11.1	9.5	8.4	6.7
			60	XC	0.49	36.4	29.1	24.3	18.2	14.6	12.1	10.4	9.1	7.3
			75	VC	0.55	40.8	32.7	27.2	20.4	16.3	13.6	11.7	10.2	8.2
BROWN	AVI 110 05	50 Mesh	40	XC	0.50	37.1	29.7	24.8	18.6	14.9	12.4	10.6	9.3	7.4
			50	XC	0.56	41.6	33.3	27.7	20.8	16.6	13.9	11.9	10.4	8.3
			60	XC	0.61	45.3	36.2	30.2	22.6	18.1	15.1	12.9	11.3	9.1
			75	VC	0.68	50.5	40.4	33.7	25.2	20.2	16.8	14.4	12.6	10.1
GREY	AVI 110 06	50 Mesh	40	UC	0.60	44.6	35.6	29.7	22.3	17.8	14.9	12.7	11.1	8.9
			50	XC	0.67	49.7	39.8	33.2	24.9	19.9	16.6	14.2	12.4	9.9
			60	XC	0.73	54.2	43.4	36.1	27.1	21.7	18.1	15.5	13.6	10.8
			75	VC	0.82	60.9	48.7	40.6	30.4	24.4	20.3	17.4	15.2	12.2
WHITE	AVI 110 08	50 Mesh	40	UC	0.80	59.4	47.5	39.6	29.7	23.8	19.8	17.0	14.9	11.9
			50	UC	0.89	66.1	52.9	44.1	33.0	26.4	22.0	18.9	16.5	13.2
			60	XC	0.98	72.8	58.2	48.5	36.4	29.1	24.3	20.8	18.2	14.6
			75	VC	1.10	81.7	65.3	54.5	40.8	32.7	27.2	23.3	20.4	16.3
LIGHT BLUE	AVI 110 10	50 Mesh	40	UC	1.00	74.3	59.4	49.5	37.1	29.7	24.8	21.2	18.6	14.9
			50	UC	1.12	83.2	66.5	55.4	41.6	33.3	27.7	23.8	20.8	16.6
			60	UC	1.22	90.6	72.5	60.4	45.3	36.2	30.2	25.9	22.6	18.1
			75	XC	1.37	101.7	81.4	67.8	50.9	40.7	33.9	29.1	25.4	20.3

APPLICATIONS

All types of treatments (systemic and contact products) including liquid fertilizers.



40-80 psi



110°

