

BROADCAST APPLICATIONS



ALBUZ

catalog 2020

Dimensions: 11 mm

ISO

Twin fan spray nozzle

AXI-TWIN 120°



ISO color code

SPECIFIC CHARACTERISTICS

- › Ceramic insert in a high resistance plastic body.
- › Adapted to any brand of sprayer.
- › Flow rate characteristics, body size and color code meet international ISO standards.
- › Flat fan pattern, droplet size vary according to pressure.
- › **Minimum boom height recommended: 20 inches.**
- › **Minimum pressure: 15 - 20 psi.**

MAIN CHARACTERISTICS

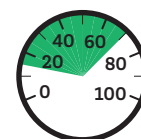
- › **Improve the penetration into the vegetation or the dense foliage.**
- › Fine droplets for maximum coverage.
- › The nozzles produce 2 spray patterns of 120 degrees spaced 70 degrees apart, optimizing coverage.
- › Excellent for contact critical applications.

FLOW RATE CHART

Color	ISO Code	Pressure (psi)	120°	gpm	Gallons / acre - Nozzle spacing: 20 inches							
					4 mph	5 mph	6 mph	8 mph	10 mph	12 mph	16 mph	20 mph
YELLOW	AXI TWIN 12002	20	M	0.14	10.4	8.3	6.9	5.2	4.2	3.5	2.6	2.1
		30	M	0.17	12.6	10.1	8.4	6.3	5.0	4.2	3.2	2.5
		40	F	0.20	14.9	11.9	9.9	7.4	5.9	5.0	3.7	3.0
		50	F	0.22	16.3	13.1	10.9	8.2	6.5	5.4	4.1	3.3
		60	F	0.24	17.8	14.3	11.9	8.9	7.1	5.9	4.5	3.6
BLUE	AXI TWIN 12003	20	M	0.21	15.6	12.5	10.4	7.8	6.2	5.2	3.9	3.1
		30	M	0.26	19.3	15.4	12.9	9.7	7.7	6.4	4.8	3.9
		40	F	0.30	22.3	17.8	14.9	11.1	8.9	7.4	5.6	4.5
		50	F	0.34	25.5	20.4	17.0	12.7	10.2	8.5	6.4	5.1
RED	AXI TWIN 12004	20	M	0.28	20.8	16.6	13.9	10.4	8.3	6.9	5.2	4.2
		30	M	0.35	26.3	21.0	17.5	13.1	10.5	8.8	6.6	5.3
		40	M	0.40	29.7	23.8	19.8	14.9	11.9	9.9	7.4	5.9
		50	F	0.45	33.4	26.7	22.3	16.7	13.4	11.1	8.4	6.7
		60	F	0.49	36.4	29.1	24.3	18.2	14.6	12.1	9.1	7.3
BROWN	AXI TWIN 12005	20	M	0.35	26.0	20.8	17.3	13.0	10.4	8.7	6.5	5.2
		30	M	0.43	31.9	25.5	21.3	16.0	12.8	10.6	8.0	6.4
		40	M	0.50	37.1	29.7	24.8	18.6	14.9	12.4	9.3	7.4
		50	M	0.56	41.6	33.3	27.7	20.8	16.6	13.9	10.4	8.3
		60	F	0.61	45.3	36.2	30.2	22.6	18.1	15.1	11.3	9.1

APPLICATIONS

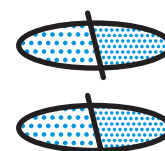
All types of treatments (herbicides, fungicides, insecticides...).



15-70 psi



15 psi



70 psi